



BMC BladeLogic Operations Manager Suite

BMC BladeLogic Operations Manager Suite is the industry-leading platform for automated management, control and enforcement of configuration changes in the data center. With BMC BladeLogic, many Global 2000 customers have dramatically lowered operating costs for managing servers and critical business applications across multiple platforms, by automating key data center functions such as Discovery and Inventory Management, Patch Management, Compliance Measurement, Enforcement and Reporting, Server and Application Provisioning, Server and Application Configuration Changes, and Ad-Hoc Tasks and Remote Administration.

KEY BENEFITS

- › Reduce operational costs by automating manual and error-prone activities
- › Reduce service downtime through policy-based configuration management
- › Consistently enforce compliance with regulatory, security, and compliance policies
- › Streamline service provisioning by consolidating and centralizing all activities across all platforms
- › Improve operational productivity by increasing server-to-admin ratio and securely sharing workload
- › Improve security by reducing the time to remediate known vulnerabilities management

BUSINESS CHALLENGE

IT organizations today face numerous challenges – increasing complexity, cost reduction mandates, compliance regulations, and pressure to be more responsive to business needs. Many IT organizations struggle to meet these challenges, and recognize that their current approaches to operations are simply not going to allow them to be successful. Manual operations tend to be reactive, labor-intensive, prone to errors, and heavily reliant on highly-skilled individuals. Even organizations that have invested in point solutions or home-grown script-based approaches are recognizing their limits, and are instead looking for a comprehensive solution that addresses all their server management and compliance needs in a single, integrated platform.

THE BMC SOLUTION

BMC BladeLogic Operations Manager Suite allows customers to manage server and application lifecycle events – including Discovery, Inventory, Provisioning, Configuration and Change Control, and Continual Compliance. Based on a unique architecture that integrates configuration automation and compliance assurance, this solution enables IT organizations to implement a policy-based automation solution for managing their data centers, while ensuring highest uptime for their business-critical services. Supported by a robust security model, this solution enables organizations to dramatically reduce operational costs, improve operational quality, and achieve operational compliance.

The BMC solution provides three main functional areas:

Configuration

Configuration management tasks often make up the bulk of the activities performed in a data center – patching, configuring, updating, and reporting on servers, across multiple platforms. The BMC solution, by shielding users from underlying complexity, enables consistency in change and configuration management activities. At the same time, subject to security constraints, it exposes sufficient detail about servers under management to ensure effective and accurate administrative activities.

Compliance

Most IT organizations are required to maintain their server configurations in compliance with some sort of policy – whether regulatory (such as SOX, PCI, or HIPAA), security, or operational. BMC BladeLogic Operations Manager is designed to help IT organizations achieve and maintain compliance, by defining and applying configuration policies. Then, the BMC solution provides detailed reports on how well servers comply with these policies. When a server or application configuration deviates from policy, the necessary remediation instructions are automatically generated and packaged, and can be either automatically or manually deployed on the server. In addition to this, operations performed on servers are constrained by the appropriate set of policies, ensuring that servers stay in compliance throughout configuration changes, software deployments, or patches.

Provisioning

In order for a business service to be available for use, it must be hosted on a running server. The initial lifecycle step for a server is the installation and configuration of its Operating System – such as Windows or Linux – and its set of initially installed application software. Supporting all leading OS's, BMC BladeLogic Operations Manager automates the OS installation and configuration for both physical and virtual servers – delivering rapid, consistent, and reliable server provisioning processes, and ensuring that all servers are set up in compliance with configuration policies.

FEATURES

- » Real-time and historical visibility into configuration and change attributes
- » Policy definitions for automated updates to patches, packages, and configurations
- » Automatic provisioning across platforms - from bare metal level to full stack for servers
- » Configuration remediation through repair, rollback, or configuration updates

PROVEN RETURN ON INVESTMENT

Using BMC BladeLogic Operations Manager Suite, customers across various industries have realized immediate value. As the underlying driver for orchestration, provisioning, configuration and change control, and compliance, BMC BladeLogic customers have dramatically lowered their operating costs by using the product to automate:

- » Server vulnerability analysis and patch deployment
- » Creation of security, regulatory or corporate compliance policies. These policies can be based on best practices, vendor recommendations, or IT governance control frameworks like COBIT
- » Reporting on current and historical compliance with policies, and generation and deployment of remediation packages for each policy
- » Establishment, enforcement, and reporting on access controls for servers and configuration items
- » Provisioning of base OS, server software stack components, and multi-tier applications
- » Deployment of patches, packages, and granular configuration updates
- » Backup and recovery of servers and their associated configurations to meet business continuity objectives

PART OF AN OVERALL BUSINESS SERVICE MANAGEMENT (BSM) SOLUTION

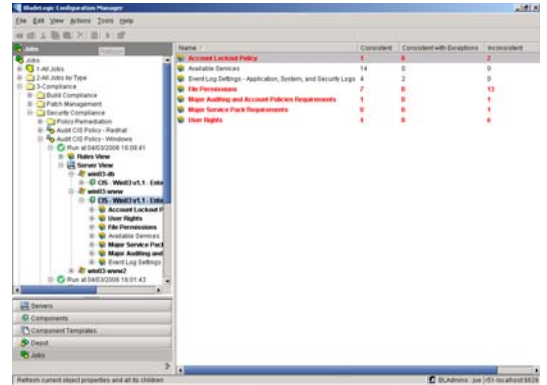
BMC BladeLogic Operations Manager Suite delivers on the vision of BSM, by providing integration with both BMC Atrium CMDB and BMC Remedy ITSM technologies. Bi-directional integration with Atrium CMDB is built-in, allowing administrators to make service-aware operational decisions, thus improving their effectiveness. In addition, detailed server configuration data is exposed in the CMDB, aiding decision-making at that level. Integration with Remedy ITSM provides true closed-loop compliance, integrating an organization's change management processes with its change execution.

CROSS PLATFORM SOLUTION

BladeLogic Operations Manager Suite supports all major OS and hardware vendors. This broad level of support enables IT organizations to standardize functional tasks across all platforms, reducing the overhead associated with specific OS vendors.

FOR MORE INFORMATION

For more information on BMC Service Automation solutions including BMC BladeLogic Operations Manager Suite, please visit: www.bmc.com.



Ensure compliance with virtualization management policies.

BUSINESS RUNS ON I.T.
I.T. RUNS ON BMC SOFTWARE
Business thrives when IT runs smarter, faster, and stronger. That's why the most demanding IT organizations in the world rely on BMC Software across both distributed and mainframe environments. Recognized as the leader in Business Service Management, BMC offers a comprehensive approach and unified platform that helps IT organizations cut cost, reduce risk and drive business profit. For the four fiscal quarters ended September 30, 2008, BMC revenue was approximately \$1.83 billion. Visit www.bmc.com for more information.