



Discovery

Discover your assets and their relationships in just 15 minutes with up to 100% accuracy

PRODUCT DESCRIPTION

Discovery (formerly BMC Atrium Discovery and Dependency Mapping or ADDM) creates a dynamic, holistic view of all data center assets and the relationships between them, giving IT crucial visibility into how the assets support the business. Each scan delves into the information and dependencies for all software, hardware, network, storage, and versions, providing IT with the context needed to create an application map from any piece of information about it. A lightweight footprint allows IT to map applications with up to 100% accuracy in 15 minutes or less.

BUSINESS CHALLENGE

Maintaining data center asset and dependency information is a challenge. Application mapping hinges on precise asset accountability; without it, data center decisions are based on best guesses. IT cannot consolidate and prioritize fixes, perform audits, and know what assets support which parts of the business. Application discovery and dependency mapping are interrelated and should come from a single, trusted solution.

BMC SOLUTION

With Discovery, IT can quickly link infrastructure and software to how it impacts the business to optimize capacity, ensure stronger security, and improve service, change, and problem management.

KEY FEATURES

Discovery is much more than a data center asset discovery solution.

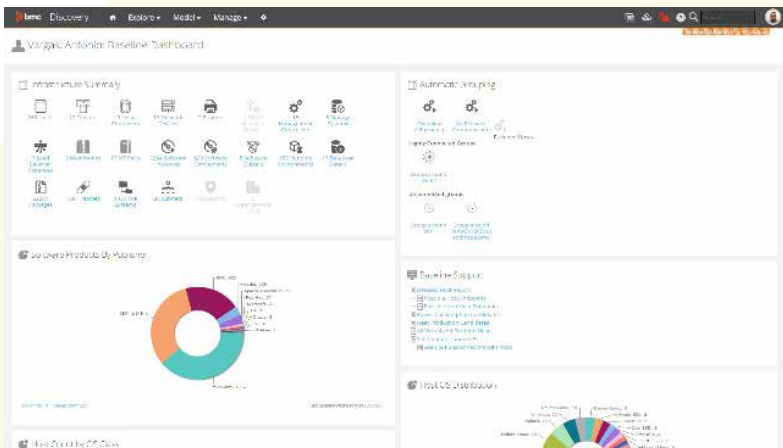
- 3 clicks to insight – Provides a single point of entry into all components of the IT infrastructure with an index search engine
- Start-anywhere application mapping – Starts mapping an application from any piece of information about it
- 3,500+ data center assets covered – Ensures that every component in your data center is discovered
- Open discovery – No matter what solutions you use, there is a single trusted source of information leveraged by many different systems
- Event-driven updates – React to infrastructure and software changes as they occur

KEY BENEFITS

- Studies have shown a five-year average ROI of 470% for Discovery customers, with a payback period of only 8 months
- Security Operations can perform essential prevention and detection, including locating servers that could be back door entry points, quickly identifying applications affected by a breach, and running a quick scan for OpenSSL
- Planning for cloud is made simpler with easy identification of assets and their dependencies to improve decisions on which assets to move to the cloud and which assets to retire



Baseline dashboard provides insightful overview and drill-down access into discovered software and hardware components.



For all the benefits of this product and more visit RJRinnovations.com



609 - 1420 Blair Towers Place, Ottawa, ON Canada K1J 9L8





PRODUCT DETAILS

Agentless, Lightweight, and Scalable: Discovery is a ready-to-run virtual appliance. Deployment takes minutes; there is no installation process to run through, no external database to install and configure, and no specific configuration and operating system requirements to satisfy. This allows you to get up and running very quickly with minimal effort to maintain it. While in operation, organizations can scan multiple times per day, depending on the need to maintain accuracy. Discovery offers nearly limitless scale through adequate architecture options, in terms of scan speed (e.g., 100,000 servers per day), size of the data stored, and speed to access information.

Automated client and agent deployment capabilities:

Using the automated agent and client deployment capability in Control-M, users can reduce the time previously required for manual upgrades and maintenance. With a few simple steps, agents and clients can be deployed or updated from a central point of control. The deployment of agent updates can also be scheduled for a later time, increasing flexibility and reducing costs.

Security:

Discovery is proven to be secure using standard security certifications, including Common Criteria EAL2. The virtual appliance has been hardened and complies with NIST STIG and supports FIPS 140-2 encryption standards. The application offers granularity in configuring access rights, encryption, and depth of discovery actions. Combine with BMC SecOps Response Service to identify which assets have not been scanned by security and may be unknown access points for attackers.

Configuration Management Database (CMDB) Integration:

Discovery offers seamless integration into Remedy CMDB with out-of-the box, continuous data synchronization. The integration can be configured so filters and rules are applied to the data prior to the load. In addition, Discovery offers web services and database integrations that can be used to synchronize the data with other CMDB technologies.

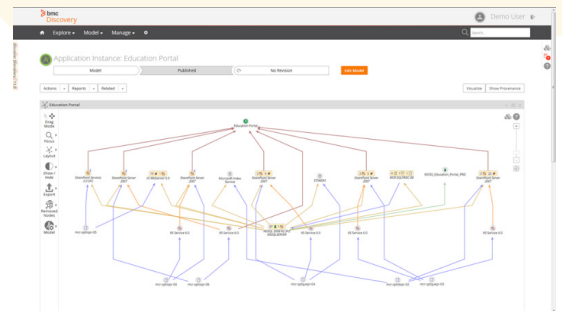
Application mapping studio leverages discovered relationships to quickly map infrastructure components to business services.



Reference Library: Discovery for Data Center provides dates for end of life, end of support, and end of extended support for common operating systems and software. This can help quickly identify unsupported software, better plan for upgrades, and avoid upgrading software that is no longer supported. The hardware reference library provides vendor specifications for hardware power and thermal ratings. This information identifies inefficient hardware so that you can address the issue directly. In addition, Discovery enriches discovered software with Common Platform Enumeration (CPE) information provided by the National Vulnerability Database. This assists security operations in identifying dependencies associated to vulnerabilities.

Discovery for Storage (optional add-on):

This content pack enables storage components from 25 virtual and physical storage brands to be included in ITSM processes, enabling storage management teams to focus on more strategic work within their discipline.



We provide innovative, customized business process consulting, software implementation services and Level 1 bilingual support for multiple ITSM and DEM solutions and add-ons. We understand that in today's day and age, technology leaders are focused on transforming how IT operates. Digital transformation and automation are key elements in ensuring that most organizations keep up with how fast-paced both technology and information are consumed and delivered – at work and at home; on premise and in the cloud.



609 - 1420 Blair Towers Place, Ottawa, ON Canada K1J 9L8

